

VISUAL INTEGRATOR 5.1

- Calc syntax highlighting

Definition:

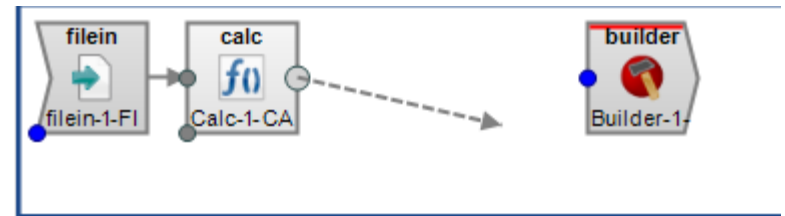
```
if (Maandtype="vorig",
    datevalue(concat(month_offset (Peilmaand,1), "-01"))-1,
    datevalue(format_date ("$(Peildatum)", "yyyy-mm-dd")))
)
```

datevalue(date)
Accepts a date, in the ISO or DI standard date format, and returns the number of days since December 30, 1899.

- Calc Auto-Complete by pressing Ctrl+Space

The screenshot shows a code editor with a dropdown menu for the `scan` function. The dropdown lists the function signature `scan(string, token_number[, delimiters=" "])` and its description: "Parses the string into separate segments based on the set of characters in delimiters, returns the segment indicated by token_number." Below the dropdown, a list of functions is visible, including `and(.)` and `if(..)`.

- New Task Canvas:
 - Drag & Drop Connection Points
- Zooming:
 - Ctrl+Mousewheel
 - Ctrl+Plus (Zoom in), Ctrl+Min (Zoom out), Ctrl+0 (Reset)
- Navigating with focus on Canvas:
 - Arrow Keys (Next, Previous)
 - Home (First Node), End (Last Node)
 - Quickfind by typing part of Node Name!



- Advanced Filtering

Manage Filters

Match: All [Reset] [Clear Filters]

Column	Operator	Expression
Woonplaats	contains	delf
	equals	

[Save] [Cancel]

DI Visual Integrator - cities.int

File Edit View Tools Help

Data Flow Data View Logs Columns Script Options

Data View History

- Results
 - Test Calc-1-CAL

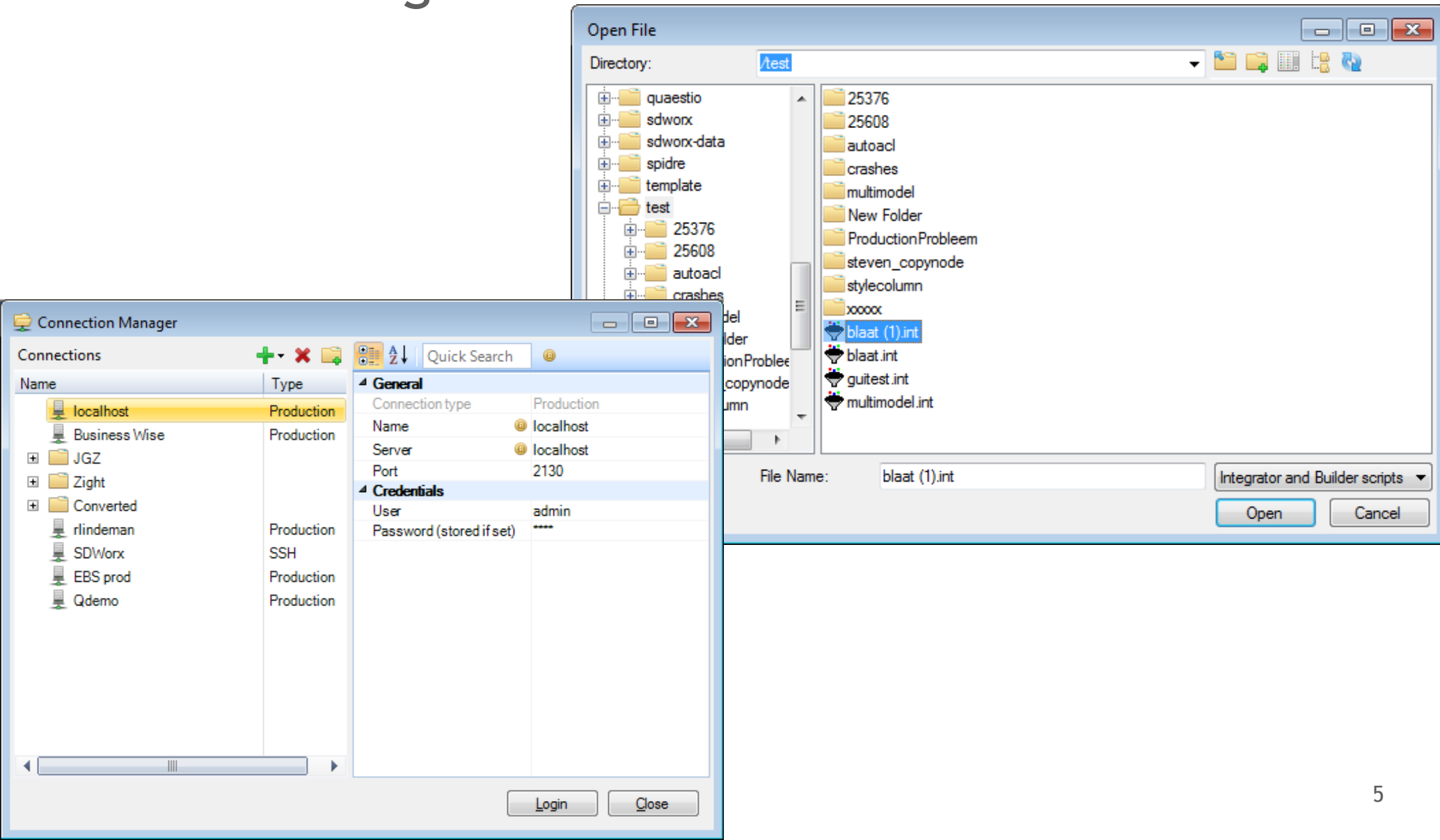
Results for object Calc-1-CAL 2448 of 2448 lines

(line)	Woonplaats	Gemeente	Provincie	Latitude
1	's-Graveland	Wijdmeren	Noord-Holland	52.244120
2	's-Gravendeel	Binnenmaas	Zuid-Holland	51.779530
3	's-Gravenmoer	Dongen	Noord-Brabant	51.666660
4	's-Gravenpolder	Borsele		54.100000
5	's-Gravenzande	Westland		
6	's-Heer-Abtskerke	Borsele		
7	's-Heer-Arendske...	Goes		
8	's-Heer-Hendriks...	Goes		
9	's-Heerenberg	Montferland		
10	's-Heerenbroek	Kampen		
11	's-Heerenhoek	Borsele		
12	's-Hertogenbosch	's-Hertogenbo...		
13	† Goy	Houten		
14	† Haantje	Coevorden		
15	† Harde	Elburg		
16	† Loo Oldebroek	Oldebroek		

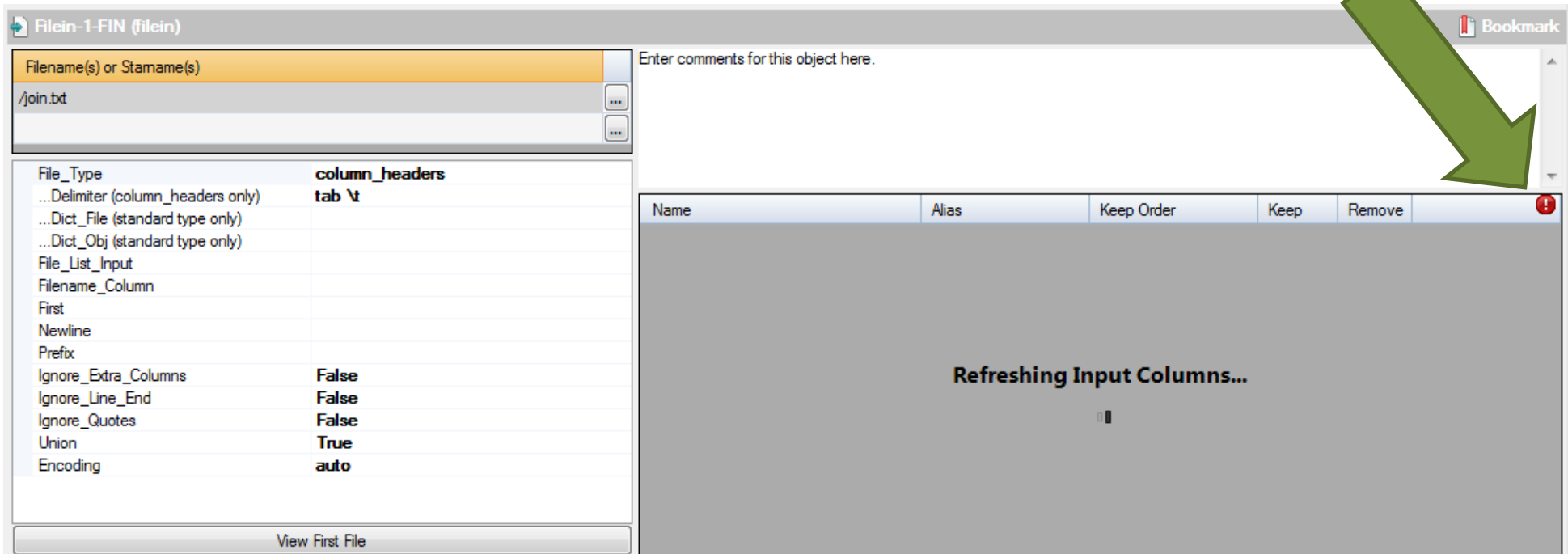
Context menu for 'Borsele' in Gemeente column:

- Copy
- Copy Window
- Create List Object
- Go To Source Object
- Set Qual String
- Repeat Test
- Select Columns...
- Sort Column
- Filter on value
- Filter...
- Remove Filters
- Show As Date

- Connecting to Remote Diveline Servers



- Refresh Input Columns: Ctrl+Shift+R
 - In the background
 - Feedback on errors



The screenshot shows a software interface with a window titled "Filein-1-FIN (filein)". The window contains a text field for "Filename(s) or Stamame(s)" with the value "/join.bt". Below this is a table with various file-related settings. To the right of the table is a text area for "Enter comments for this object here." Below the table is a "View First File" button. The main area of the interface is a table with columns: "Name", "Alias", "Keep Order", "Keep", and "Remove". The table is currently displaying "Refreshing Input Columns..." in the center. A red error icon is visible in the top right corner of the table header. A large green arrow points to this error icon.

Name	Alias	Keep Order	Keep	Remove
Refreshing Input Columns...				